

EVOLUTION SUPREME CHAIR

The R&R Healthcare Equipment range of chairs offer you the ultimate in comfort and features.



Innovative Healthcare Solutions

Exclusively distributed by



Country Care
GROUP

National Distribution, Local Service



The Comfort

The latest technology visco elastic foam is designed to distribute weight over a larger area relieving pressure on the patient without compromising postural support and allowing natural alignment of the spine. The cover is a Carflex material designed to give multiple stretch, which provides low resistance between the person's body and the visco elastic foams. With fully adjustable head support, increased lumbar support and a full range of sizes, this chair delivers a comfortable long term sitting environment and helps protect against pressure sores. The extra high position available on the elevated leg rest is beneficial for the reduction of fluid retention and the super soft tub style seating system ensures there is no "BAR" felt on the back of thighs.

Features

- Low seat height for easier stand assist transfer
- Low friction 5 inch castors with directional lock
- Elevating leg rest to reduce fluid retention
- Soft touch levers for easy operation of tilt, recline, elevating leg rest
- NEW: Drop side model available in Evolution Supreme (small, medium, and large)



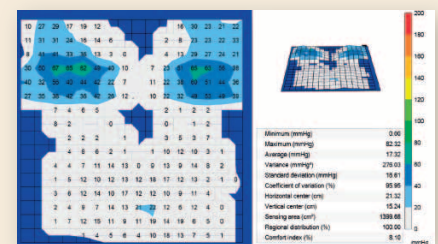
Description	Seat Depth	Back Height	Seat Width	Seat to Floor Height	Overall Width	Maximum User Weight	Warranty
Supreme Evolution Chair Small	485mm	800mm	455mm	620mm	700mm	145kg	2 Years
Supreme Evolution Chair Standard	585mm	800mm	484mm	620mm	730mm	145kg	2 Years
Supreme Evolution Chair Wide	585mm	800mm	585mm	620mm	830mm	190kg	2 Years
Evolution Chair Standard	510mm	760mm	460mm	590mm	680mm	145kg	2 Years
Evolution Chair Wide	510mm	760mm	530mm	590mm	750mm	190kg	2 Years

The Design

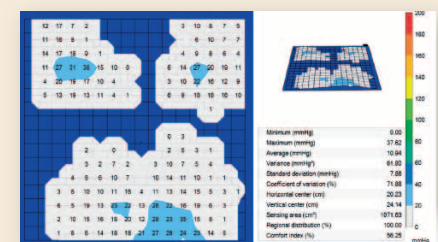
The evolution chair has been designed as a low maintenance, user-friendly chair with a large range of adjustable seating positions to suit almost any user. Combining the options of soft touch levers for easy operation to tilt, recline and elevate leg rest, a lower seat height that is designed for easier stand assist transfers and the low friction 5 inch castors with a directional lock, this chair truly does care for the care givers as well as the patient. For carers, it is easy to operate and manoeuvre with specially designed curved steering handles. The drop down arms make it easy to fit and remove slings, allows side transfers and can fit under most standard tables.

Pressure Mapping

Seat Mapping in Upright Position



Seat Mapping in Tilted Position



Mapping conducted with 80kg male on Evolution Chair.

Exclusively distributed through your local member of the **Country Care Group**.



Scan with your smartphone or tablet to instantly visit the R&R Healthcare website.

FREE CALL 1 800 684 405

www.randrhealthcare.com.au